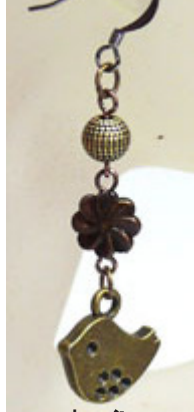




The Bead Hold

NEW ZEALANDS PREMIER BEADING SUPPLY STORE

HOW TO: Make a Chain Linked Earrings



Round Nose Pliers

Tools Required

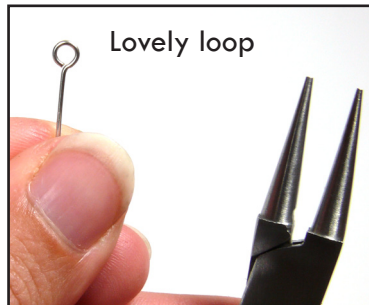
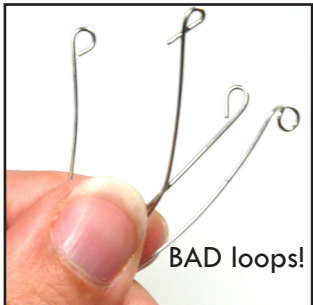
1. Chain Nose Pliers
2. Round Nose Pliers
3. Wire Cutters

First you need to be comfortable making a round loop at the end of a piece of wire using your pliers.

This is the base of all chain work. We recommend practicing your loops on craft wire if you are new to this before starting on a project.

You can buy a roll of wire, or you can buy it by the meter. We recommend 20 gauge as a good multi purpose thickness to start with. 22 gauge is also good, especially if you want your pieces to be a little finer.

MAKE A LOOP



1. Hold your round nose pliers in your ACTION hand and grip your wire 1/3 of the way down the length of the pliers.

2. Run your finger along back of pliers to make sure the wire is flush. If not, move it down further.

3. Hold the wire with your ROCK hand, thumb and forefinger just under the pliers for stability and control.

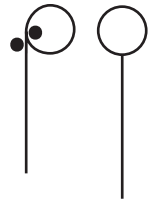
4. Hold tight with the pliers and turn your wrist AWAY from you to start making the loop.

5. As your wrist starts to feel awkward, release the pressure of your grip on the pliers and swing your wrist and the pliers until they are at the top of the half formed loop. Hold tight again and turn AWAY from you to complete the loop. You may need to repeat this several times. Check your loop is totally closed. If not, grip again and close the loop completely.



'LOLLIPOP' YOUR LOOP

1. Using the very TIPS of your pliers, place the back jaw of your pliers inside the loop, and the front jaw outside the loop. Close gently at the base of the loop.



2. Now, using no pressure, put your pliers on a slightly open downward angle.

3. Hold tight, and tweak back TOWARD you to straighten the loop.

TIP: If your loop opens as you straighten it, you do not have enough of a downward angle when you tweak back toward yourself OR you are not using the tips of your pliers OR both!

Your ACTION hand is your dominant hand

- this hand does all the work

Your ROCK hand is your other hand

- this hand holds and grips and should never move

TIP: When lollipop next to a bead, tweak too far back on a flat angle. This will open the loop a little. Now, as you close the gap by turning away from yourself, you will also straighten it. This stops you from breaking the top bead of your set.

FIGURE 8'S

Each bead set will have 2 loops, one at each end of the bead. Ideally, you want one loop curling up, and the other down like a figure 8 - then everything will hang straight.



If your loops are going in the same direction, or are a bit bent out of shape, grip one loop entirely in your chain nose pliers, making sure it is curling up. Then, grip the other loop in your round nose pliers, and gently turn it until it is facing down.

EARRINGS: Basic Design Principles



PYRAMID DESIGN

Largest bead at the bottom, spacer on top, smaller bead on top again. This is a bead set.



EYE DESIGN

Large bead framed either side by smaller beads. This can also be asymmetrical. This is a bead set.

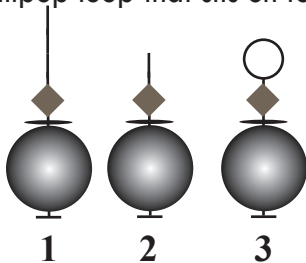
MAKE: Simple Drop Earrings

You will need:

- 2 x lovely feature beads
- 2 x spacers
- 2 x 4mm Swarovski crystals
- 2 x headpins
- 2 x 4mm jumprings
- 1 pair of earring hooks or studs

If you prefer an eye shape, double the spacers and crystals

1. Slide a feature bead, spacer, crystal onto a headpin. For an eye shape, put on a crystal and a spacer first.
2. Cut the pin 1 cm above the last bead
3. Make a lollipop loop that sits on top of the last bead



4. Attach the bead set to your hook/stud with a jumpring
5. Repeat for the other side.

MAKE: Linked Drop Earrings

When you want a longer earring, it is necessary to link your bead sets together rather than stacking your whole headpin with beads. If you fill the length of the headpin with beads, the resulting earring will be stiff and lacking in movement.

You will need:

- 2 x main feature beads
- 2 x smaller feature beads
- 6 x spacers
- 2 x 4mm Swarovski crystal
- 4 x headpins
- 4 x 4mm jumprings
- 1 pair of earring hooks or studs

1. Make up your main feature bead as for the simple drop earring.

2. Make a lollipop loop at the end of a piece of wire or chop the headpin off a head pin and use that wire.

3. Slide on a smaller feature bead, framed with your spacers and accent beads as desired

4. Cut the wire 1 cm above the last bead.

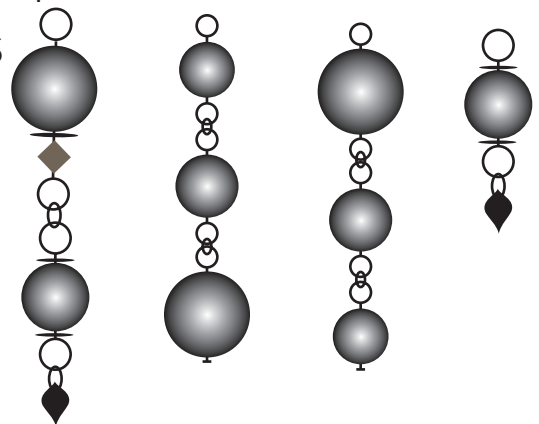
5. Make another lollipop loop as before, making sure it ends up sitting directly above the last bead.

6. Use a jumpring to link the two bead sets together. Then, use another jumpring to connect the bead sets to your earring hook/stud.

TIPS

The overall design of your linked drop earring should be an eye or pyramid shape. An inverted pyramid also works well. Your design does not have to be symmetrical, but the general principle of starting or finishing with a small bead is important to balance the look of the earring.

IDEAS



For more tips, tricks, inspiration and tutorials and all your beading supplies visit us at

www.thebeadhold.co.nz

These instructions are Copyright to Nia Chesswas 2014. All Rights Reserved.